

DEFUND THE WALL

FUND OUR FUTURE

A report by the #NoBorderWall Coalition of Laredo
submitted to the Laredo City Council

July 27, 2020

DEFUND THE WALL / FUND OUR FUTURE

TABLE OF CONTENTS

1. THE WALL IS NOT A DONE DEAL

2. A PATH OF DESTRUCTION: THE REALITY OF THE WALL

Public Spaces
Homes & Neighborhoods
Environment
Methodology
Unanswered Questions

3. DEFUND THE WALL, FUND OUR FUTURE

Cost of the wall
What we could fund instead with a strategic redirection of those federal funds

4. STREET MURAL

Visualization

5. APPENDIX

Funding Statistics and Sources

THE WALL IS **NOT A DONE DEAL.**

WE CAN STOP IT. WE HAVE A PLAN.

- 1) **DELAY** UNTIL THE ELECTION/INAUGURATION**
- 2) **CANCEL** IMMEDIATELY AFTER**

This strategy is widely understood as credible and has been acknowledged by U.S. Rep. Henry Cuellar, who sits on the U.S. House Appropriations committee, who may soon have the ability to DEFUND THE WALL. This plan can work if we stand our ground – united – in a concerted effort by elected representatives, legal action, and grassroots mobilization.

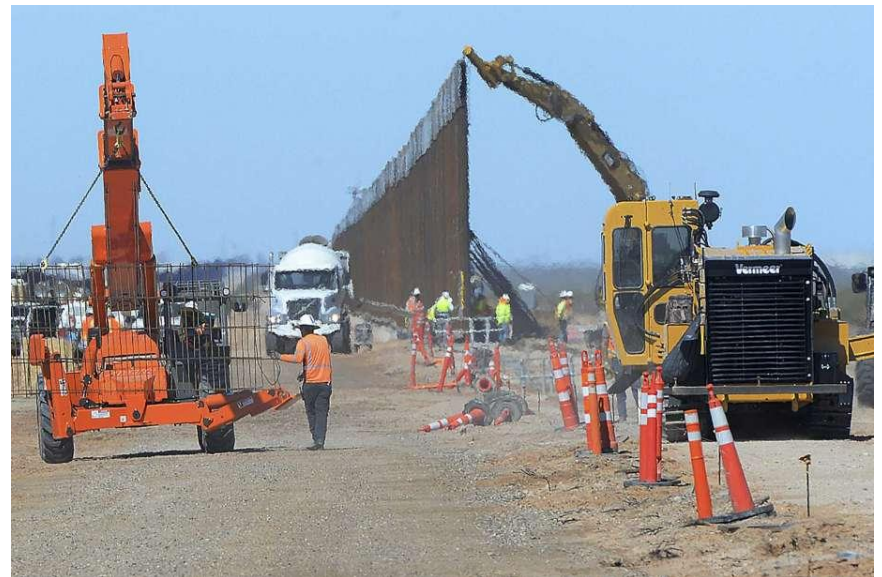
The people of Laredo are counting on you to do your part.

A PATH OF DESTRUCTION | THE REALITY OF THE WALL

The reality of the potential border wall has been withheld from public view in Webb and Zapata counties. We believe the public has the right to see what the wall would look like in their community.

To create the images you are about to see, we sourced data from official maps from the U.S. Army Corps of Engineers, satellite imagery, CBP diagrams and contractor models for the design of the wall itself.

Images in this report show just a few representative locations.

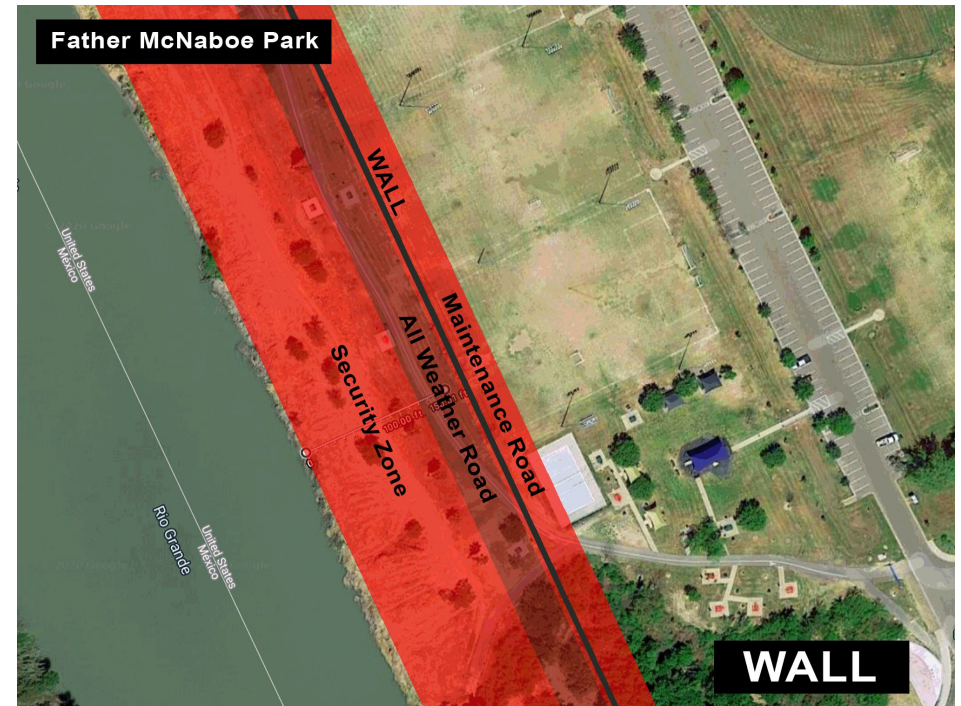


A PATH OF DESTRUCTION | PUBLIC PARKS



The wall would eliminate a wide corridor of cherished, high traffic public spaces along the river, from Tres Laredos Park to Fr. McNaboe Park. The open, tranquil view of the river, one of the most attractive features of living in Laredo, would be gone.

A PATH OF DESTRUCTION | PUBLIC PARKS



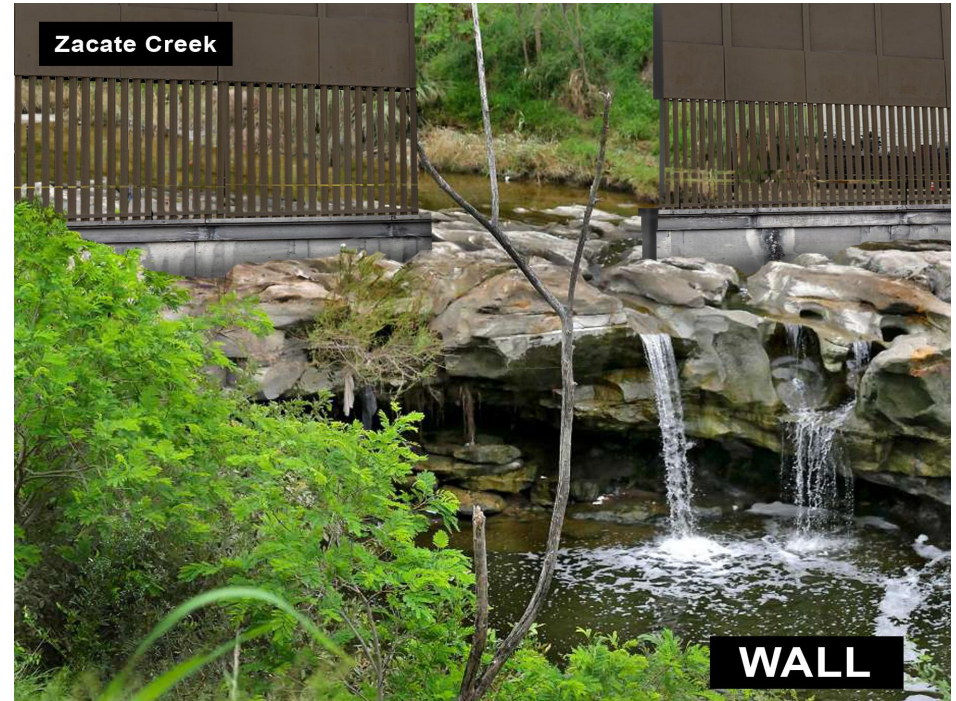
An aerial image of Father McNaboe Park shows what the 150-foot enforcement zone, plus Wall and roads, would look like in reality. It would destroy the scenic riverfront bike path and picnic area, as well as a wide swath of the frequently used playing fields.

A PATH OF DESTRUCTION | HOMES & NEIGHBORHOODS



Multiple residential neighborhoods are directly adjacent to the path of the proposed wall. The proximity of homes and streets to the wall will make these neighborhoods feel like they are in an open air prison.

A PATH OF DESTRUCTION | ENVIRONMENT & RECREATION



Irreplaceable riparian habitat and creek systems that are popular recreational sites for locals and eco- tourists will be directly impacted by the wall. The path of the proposed wall cuts across the stunning Zacate Creek waterfall, a renowned birding hot spot in the United States.



Image Source: [Map of wall pathway provided by US Army Corps. of Engineers](#)

A PATH OF DESTRUCTION | UNANSWERED QUESTIONS

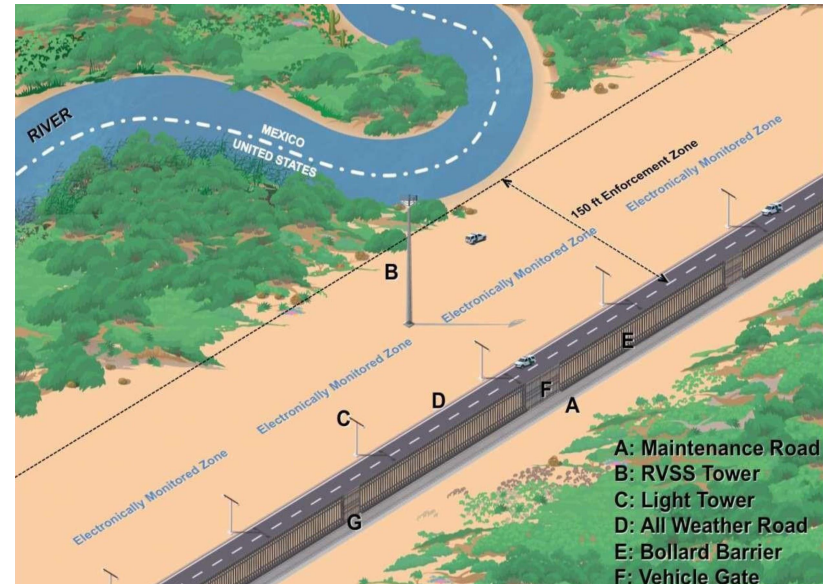
Why hasn't the US government provided anyone with renderings of what the wall would really look like?

Private developers and government agencies routinely provide the public with architectural renderings of proposed projects. However, in this case, the government has not provided the public with a single 3 dimensional rendering of the border wall as it would look in Webb or Zapata.

We believe public deserves to know.

Why do the proposed pathways of the wall not match the actual width of the enforcement zone?

The wall, once you add the enforcement zone and roads is far wider than it appears on any maps provided by the federal government. It will create a much larger swath of destruction of neighborhoods and public spaces.



A PATH OF DESTRUCTION | HOW THESE IMAGES WERE PRODUCED

The renderings in this document are derived from official government sources. They are accurate to scale both in height and width. Renderings were created by applying the official CBP footprint of the wall (combined with the Caddell Construction design) to the proposed path of the wall [provided by City of Laredo-Planning Dept, which was obtained from the US Army Corp.](#) .

Width: 150' + Wall + Maintenance Road ~175'

Height: 30 ft

Color: Black

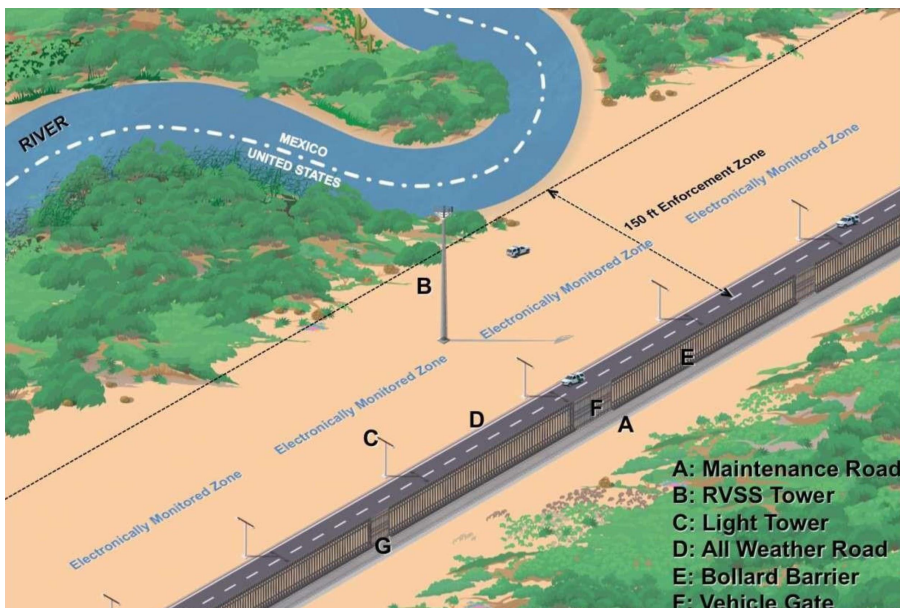


Image Source: [U.S. Customs and Border Protection](#)
"Border wall system rendering riverine," [Border Wall Project](#)
[Press Briefing 03.30.18](#)

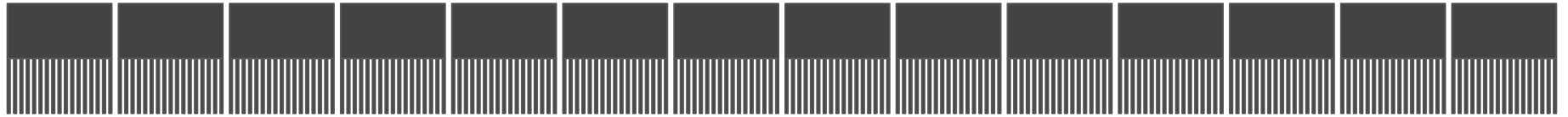
Design: Caddell Construction Border Wall Design, [Washington Post](#)
Color: "[Trump's Pandemic Priority: Paint Border Wall Black,](#)" [Vanity Fair](#)

DEFUND THE WALL

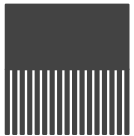


FUND OUR FUTURE

THE COST OF THE WALL



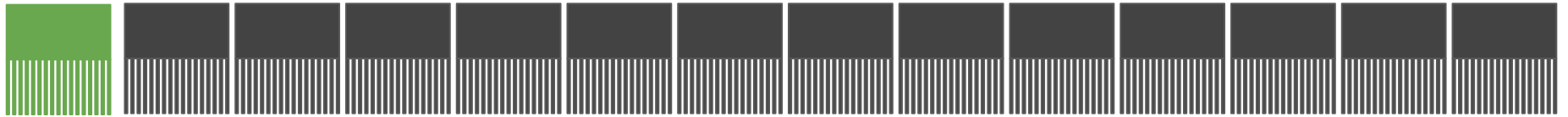
14 mile section of wall = \$275 Million



1 mile section of wall = \$19.6 Million

**How much of funding for the wall would it take
to fund what we actually need?**

EDUCATION



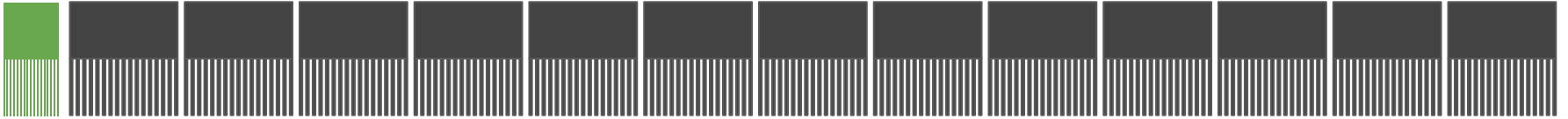
1 mile



Free tuition for Laredo College
associates degree for all graduating
high school seniors at UISD & LISD
for the next 10 years

(Cost:\$19.6M | Source: Laredo College)

HOUSING



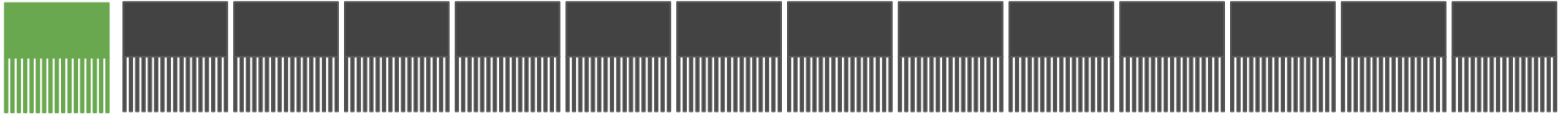
0.46 miles



**100 transitional housing units to
serve people exiting homelessness.**

**(Cost: \$9M, approx \$85K per unit | Source: local
homeless advocates)**

ENVIRONMENT



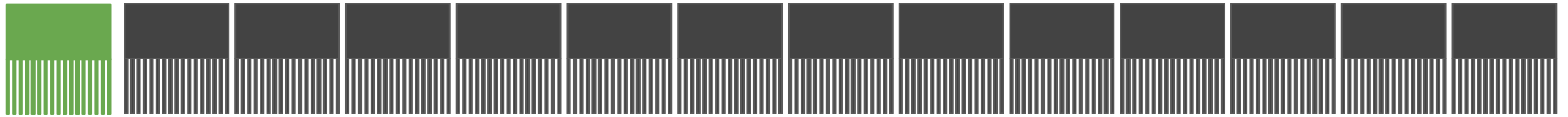
1 mile



**Planting of 130,933 native trees
throughout the city.**

(Cost: \$150/tree | Source: Retail nurseries)

EDUCATION



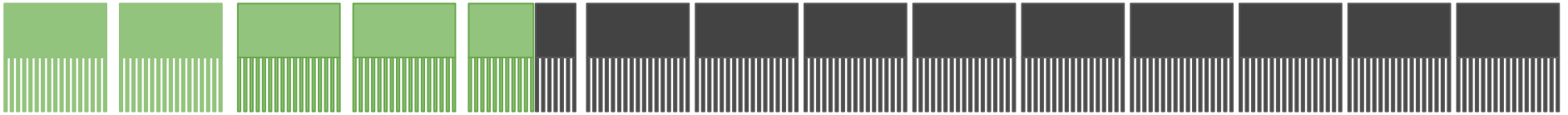
1 mile



**Salaries for 260 full-time Texas
A&M International University
faculty for one year.**

(Cost:\$19.6M | Source: TAMIU)

EDUCATION



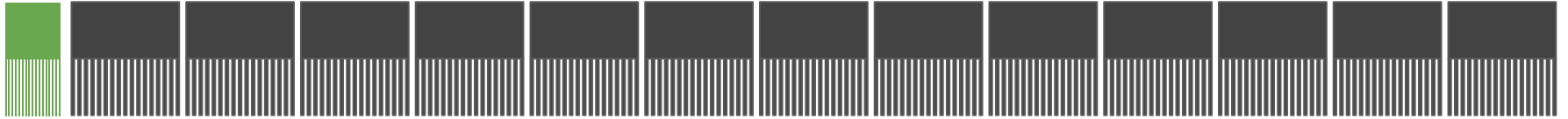
4.13 miles



**Internet connectivity + Ipads for
remote instruction for all 66,000
UISD (43,000) and LISD (23,000)
students for 2 years**

(cost: \$81.8M | Source: UISD, LISD)

DOWNTOWN REINVESTMENT



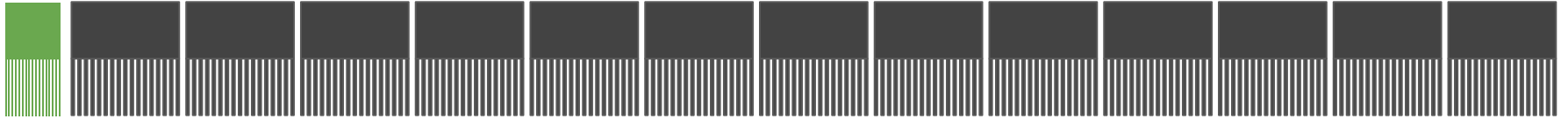
.56 miles



**Renovate and restore the
Plaza Theater downtown**

(Cost: \$11M | Source: Laredo CIP)

TRADE



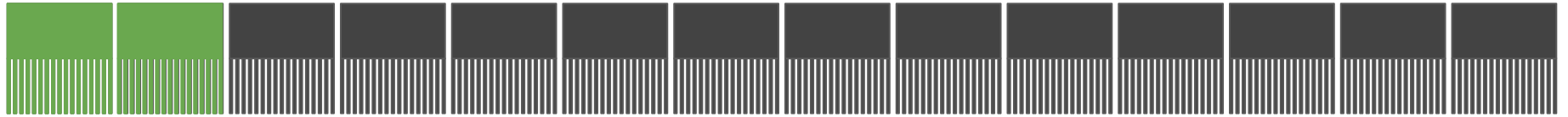
.52 miles



**4 fast lanes at the World
Trade Bridge, nation's largest
inland port**

(Cost: \$10.3M | Source: Laredo CIP)

ENVIRONMENT



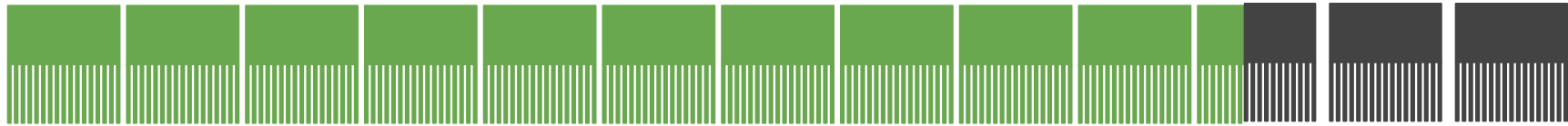
1.9 miles



**Replace the entire 50-bus El Metro
bus fleet with an all-electric fleet.**

**(Cost: \$37.5M | Source: American Public Power
Association)**

ECONOMIC DEVELOPMENT



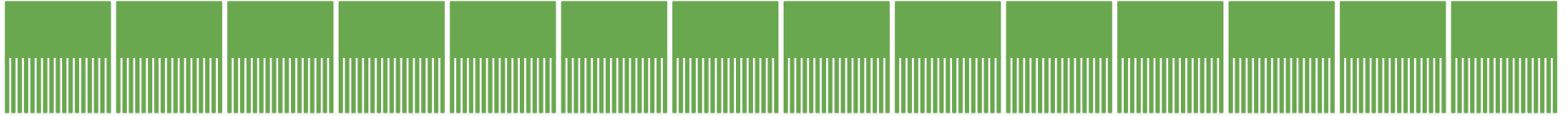
10.4 miles



**The entirety of the City of Laredo's
General Fund (i.e. fire, police, public
works, parks, and other city
departments) for current fiscal year**

(Cost: \$204.5 Million | Source: Laredo CIP)

HOUSING



14 miles



**Construction of 2,291 homes for
low-income families.**

**(Cost: \$120,000 unit | Source: local housing
advocates)**

ENVIRONMENT



14 miles



**Provide solar rooftops for 9,549
single family homes, nearly 20%
of all single family homes.**

*Note: Laredo had 53,982 single family
homes as of 2018 (U.S. Census).*

**(Cost: \$40,000 solar system with 28% tax
credit | Source: local consumer data)**

STREET MURAL | ARTS PROPOSAL



The proposed street mural for Victoria St. We propose that the completion of the mural serve as the official launch for this campaign. We urge you to join.

APPENDIX

SOURCES

We are grateful to the following for providing this valuable information for our community: City of Laredo, Webb County, Laredo College, Texas A&M International University, Office of Senator Zaffirini, local medical hospitals, Laredo Independent School District, United Independent School District, as well as local engineers, architects and advocates for the homeless and affordable housing.

FUNDING STATISTICS

PUBLIC EDUCATION

14 miles could fund

- Construction of 5.5 high schools (3000 student capacity), incl. real estate
- Construction of 10 middle schools (1500 student capacity), incl real estate
- Construction of 30 elementary schools (850 students), incl real estate;
- 4.13 miles - internet connectivity + ipads for remote instruction for all 43,000 UISD and 23,000 LISD students for 2 years (\$81.18M)
 - o wifi hotspot for each student @\$20 for 24 months (\$31.68M)
 - o iPads for each student @ \$750 each (\$49.5M)

At United ISD:

- 1.4 miles - construct a 5,000-seat sports and events center (\$28M)
- 1.02 miles - construct a one-stop Parent Center and Administrative Complex (\$20M)
- 4.1 miles - replace and convert the entire fleet of 350 active diesel school buses into an all-electric fleet (\$80.5M = \$230,000 per school bus)

At Laredo ISD:

- 14 miles - construct 2 new high schools for 2,000 students, 2 new middle schools for 1,500 students, 3 new elementary schools for 750 students
- 1.02 mile - construct a Parental Involvement/Professional Development Center, \$20M
- 0.09 miles could fund scholarships at a Texas public university for all graduating seniors (Class of 2021 through Class of 2033) = \$1.8M

APPENDIX

HIGHER ED

Two miles of wall construction could provide real opportunities for many years and several generations to our local community. It could help Laredo provide educational pathways and training programs for locals to obtain good-paying professional careers to meet industry demands for our entire region.

If used wisely, as we realistically and strategically propose below, the cost of 2 miles could basically guarantee the elimination of poverty for Laredo in a matter of just a few years.

At Laredo College:

1 mile could fund

- free tuition for LC associates degree for all graduating high School seniors at UISD & LISD for the next 10 years
- construction of a Center for Electrical & Unmanned Vehicle Technologies
- construction of a Center for Advanced Manufacturing
- construction of an Intra-Agency Homeland Security Center
- salaries for 100 full-time LC Faculty for 2 years
- triple the student capacity of Texas' top-ranked nursing and all health career programs

2 miles could fund

- construction of a Laredo College North Campus

At Texas A&M International University:

1 mile could fund

- salaries for 260 full-time faculty for 1 year
- **full tuition, fees, room and board for 1,600 students**
- staffing for a new Center for Renewable and nonrenewable energy for 3.9 years (\$5M/year)
- staffing for a new Center for Border Security for 6.5 years (\$3M/year)

Other

- 5.1 miles could fund the construction and staffing of a new research facility with state of the art laboratory and top-level faculty.
- 5.1 miles could fund the construction and staffing of a new life sciences program to recruit new faculty that are doing cutting edge research.
- 6.1 miles could fund the construction and staffing of a public health program for initiatives in epidemiology and the study of chronic and acute diseases.

APPENDIX

HOMELESS

- 0.15 miles to construct a chronic homeless shelter for 50 individuals (\$3M)
- 0.46 miles to construct 100 transitional housing units to serve those exiting homelessness (\$9M, approx. \$85K per unit average cost)

AFFORDABLE HOUSING

Laredo has approximately 69,908 households. Of those, nearly 20,972 (30%) live below the poverty line.

14 miles could fund

- Construction of 1,800 new 1500 square foot homes
- Construction of 2,291 homes for low-income families. (approx. \$120,000 per unit)

MEDICAL/HEALTH

Nearly 35% of the Laredo population has no access to any health care, or medical insurance – private, employee funded, or government (Medicare and Medicaid).

As a growing city of 260,000 people, Laredo also has no major trauma center. Locals have to get flown out by helicopter to other cities for adult and pediatric trauma care.

Laredo is also deeply deficient in the number of practicing physicians (primary care, family medicine, specialists). It ranks 19th among the top 20 Texas cities on the Health Professional Shortage Area (HPSA) list. This applies to physicians for primary care and family medicine, specialists.

Mental health providers such as Border Region MHMR have no psychiatrists on staff due to budget constraints.

Programs and subsidies are needed to attract more physicians. This could include eliminating medical school debt as a recruitment tool to improve Laredo's ranking on the HPSA list and get our city to a different level of quality care.

Meanwhile, Laredo also has no facility to treat individuals struggling with drug addiction. Individuals have to go to San Antonio, Corpus Christi or El Paso for a significant detox or substance abuse program.

APPENDIX

MEDICAL/HEALTH (cont'd)

1 mile could fund

- creation and staffing of a Level II Major Trauma center at a local hospital for 3.3 years (\$6M per year).TCAGREES
- Staffing and operations of a 12-bed detox center for 9.8 years
- 0.3 miles to construct a 12-bed detox center
- 0.6 miles to provide each of the 5,042 Laredoans with a positive COVID case, as of 7/25/2020, with a 5-day treatment course of Remdesivir (\$11.8M)

INFRASTRUCTURE

14 miles could fund

- re-pave approx. 34,375 city blocks (Laredo has approx 9,000 city blocks)
- build 10 interchanges along Loop 20
- build 2.5 new water plants

At City of Laredo:

- 0.08 miles to acquire land for the cemetery to meet the burial needs for citizens of Laredo, \$1.5M
- 0.22 miles could construct new public library (San Isidro branch), \$4.35M
- 0.36 miles to construct a new Police Department annex to house detectives, narcotics, juvenile enforcement, special investigative unit, SWAT, finance), \$7.15M
- 0.38 miles could construct two new fire stations for Unitech and Hwy 59, \$7.41M
- 0.52 miles could construct 4 fast lanes at the World Trade Bridge, nation's largest inland port, \$10.3M
- 1 mile could widen Del Mar from I-25 to Loop 20 to a 6 lane roadway with 5 bus bays, \$19.6M
- 1.02 miles could fund construction of a new EL Metro transit hub in north Laredo (\$20M)
- 1.04 mile could widen Meadow from Saunders to Hwy 83 to 4 lanes, \$20.46M
- 1.07 miles could fund a river road from Riverbank to Vidal Cantu Rd., \$21M
- 2.29 miles to construct new DHS headquarters for CBP, ICE and Customs at airport property, \$45M
- 2.7 miles could fund 5-lane Hachar Parkway from Mines Road to I-35, to relieve Mines Road congestion, \$53.1M
- 2.71 miles could widen both Guadalupe and Chihuahua from 2 lane to 3 lane, \$26.64M each
- 3.17 miles to construct the Manadas Creek wastewater treatment plant, \$62.2M

APPENDIX

INFRASTRUCTURE (cont'd)

- 5 miles could construct 9 railroad overpasses in the City, (\$99.9M @ \$11.1M each)
- 15.27 miles could fund construction of the 5th international bridge, \$300M
- 16.8 miles could fund construction of the four-lane Outer Loop, \$330M

At Webb County:

- 3.87 miles could pave 280 miles of 43 unpaved county roads, \$76.0M
- 0.1 miles could construct two additional Fire/EMS stations, \$1.94M
- 0.1 miles could staff 2 public health facilities for the Indigent Health Department, \$1.8M

ENVIRONMENTAL & QUALITY OF LIFE

- 0.32 miles could redevelop the four downtown city blocks between Hidalgo and Victoria on I-35, known as Boulevard of the Americans, \$6.38M
- 0.66 miles to fund the construction of a community rec center on 10 acres of creek trail with multiple recreational facilities (tennis courts, basketball courts, swimming pool), \$13M
- 1.9 miles could replace the entire 50-bus El Metro fleet into an all-electric fleet (\$37.5M @ \$750,000 per public transit bus)
- 14 miles could provide solar rooftops for 9,549 single family homes (nearly 20% of all single family homes), with a \$40K solar system with 28% tax credit, (53,982 single family homes, as of 2018)
- 0.13 miles could fund the installation of 5 real time sensors in the river, operate and maintain them, and conduct quarterly sampling for heavy metals, pharmaceuticals, and emerging contaminants for 5 years, \$2.45M
- 1.1 miles could purchase 14,000 acre feet of Class A water rights from the lower Rio Grande Valley, to keep a steady flow of water in the river to maintain a healthy ecosystem and support aquatic species, \$21M

1 mile could fund

- Planting of 130,933 native trees throughout the city (\$150)
- Construct 392.8 miles of scenic hike and bike trails (\$50,000/mile)
- Construct an 80-100 acre regional park with trails and natural amenities (\$15M), incl. real estate
- Construct a community water park (\$15-20M)

APPENDIX

ENVIRONMENTAL & QUALITY OF LIFE (cont'd)

- 0.07 miles could fund critical improvements (\$1.29M) to improve habitat for wildlife and provide visitors with a better experience when they visit:
 - *plant 1,000 native trees
 - *2 natural playscape areas
 - *boat dock with kayak launch
 - *Old Museum Renovation (repairs + solar panels)
 - *New Fishing Pier

ECONOMIC DEVELOPMENT & DOWNTOWN REINVESTMENT

- 3.56 miles to construct a regional conference center (\$70M)
- 2.34 miles to restore and redevelop the old Mercy Hospital (\$150 sq ft*308 sf)
- 0.12 miles to restore and redevelop the abandoned St. Anthony Hotel downtown (\$200 sq ft*12,000 sf)
- 0.19 miles to restore and redevelop the historic Bender Hotel downtown, circa 1914, (\$200 sq ft*18,500 sf)
- 0.56 miles to renovate and restore the Plaza Theater downtown, \$11M

OTHER COST COMPARISONS

- 10.4 miles could fund the entire City of Laredo's general fund (fire, police, public works, parks, and other city departments) for the current fiscal year (\$204.5M)
- 14 miles account for 70% of ALL total property taxes in Laredo for the current fiscal year (school districts, city, county, community college). \$391M

14 miles could fund

- a \$3,000 pay raise for all teachers in the four Laredo, United, Zapata County, and Webb Consolidated independent school districts for 21 years.
- fund current operations at the UT Health Science Center at San Antonio Regional Campus in Laredo for 79 years.
- \$20 million in additional scholarships for TAMU, annually, for 14 years.